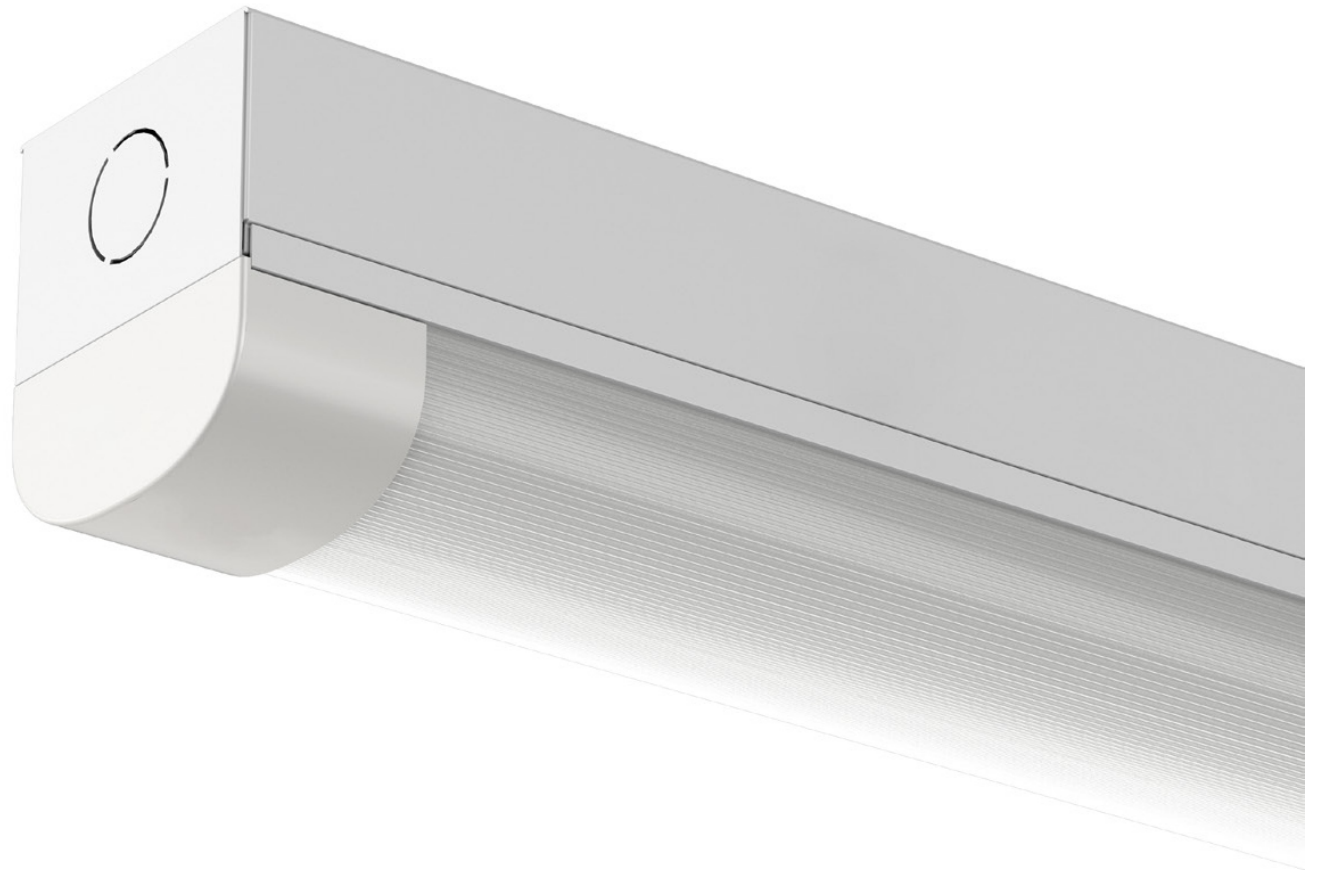


CL-BT SERIES



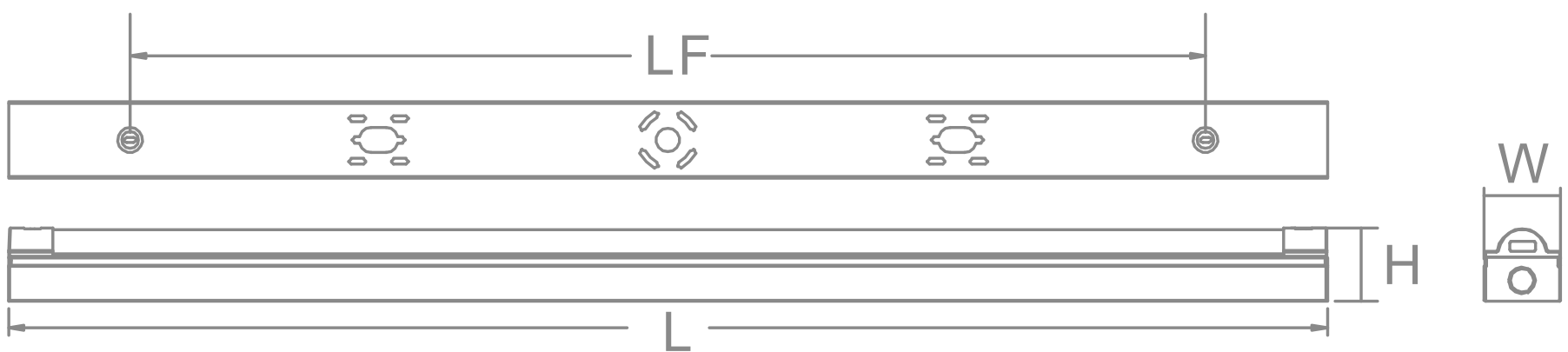
- Conduit entry points at both ends
- Suitable for central BESA mounting
- Steel body construction with powder coat finish
- Unique opal diffuser design for optimum performance and light distribution
- Polycarbonate end caps
- Instant light output with unlimited switching
- Flicker free LED driver built-in for increased visual acuity and comfort
- Option for emergency with Lithium Iron Phosphate Battery
- DALI and 1-10V dimming available
- PIR sensor on/off



IP20

5yr
WARRANTY

120°
BEAM



CODE	SIZE	LED	Watte	L	W	H	LF
CL106BT	2ft	SMD2835	Single 10W / Twin 20W	610	64	69	406
CL112BT	4ft	SMD2835	Single 20W / Twin 40W	1220	64	69	1016
CL115BT	5ft	SMD2835	Single 30W / Twin 50W	1524	64	69	1320
CL118BT	6ft	SMD2835	Single 40W / Twin 60W	1829	64	69	1625